

# Evaluating the Economic and Fiscal Landscape of Georgia

Prof. Sally Wallace

Professor and Chair, Department of Economics

Director, Fiscal Research Center

February 5, 2015

# Fiscal Research Center

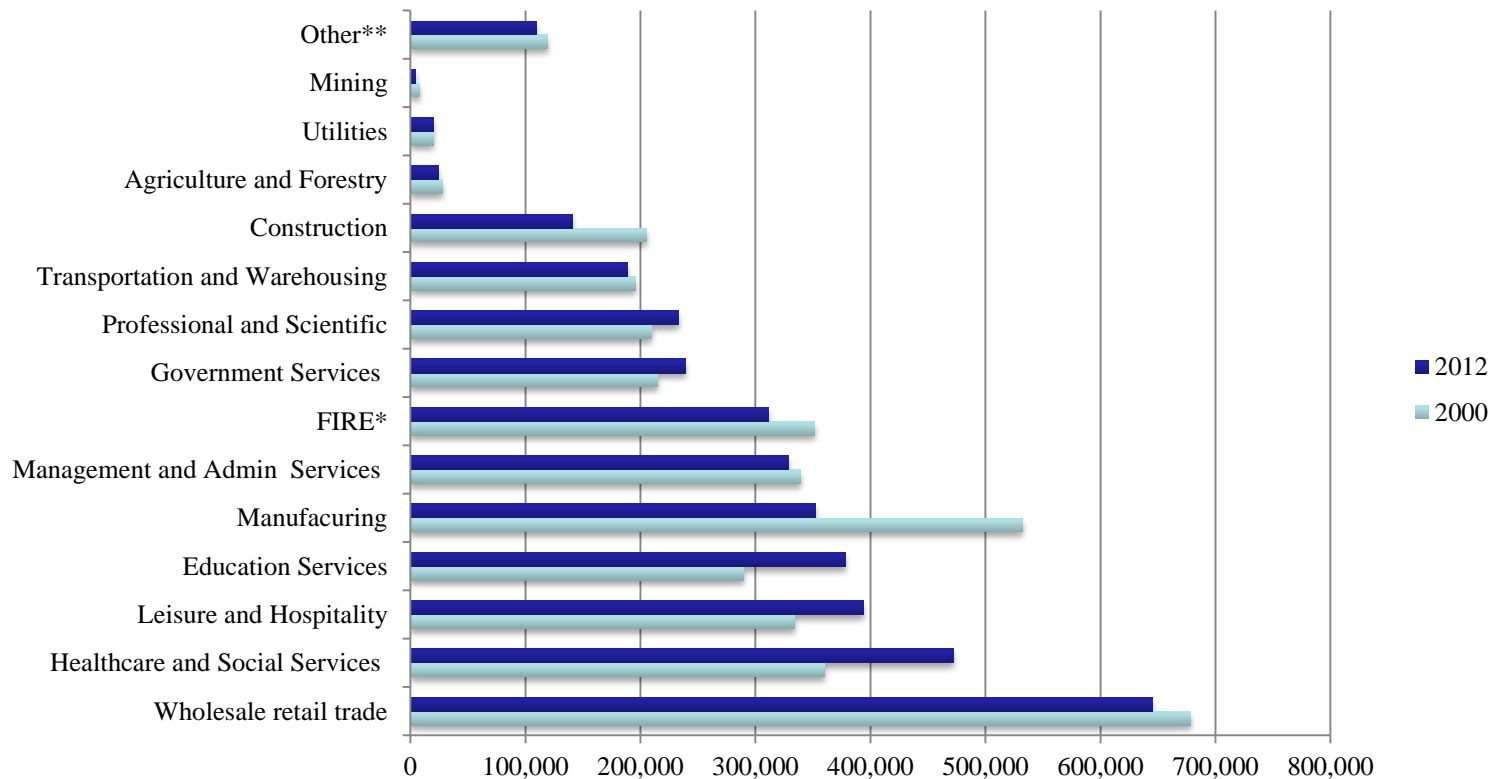
- Established in 1995, the Fiscal Research Center (FRC) provides nonpartisan research, technical assistance and education in the evaluation and design of state and local fiscal and economic policy.
- What do we do?
  - Tax Advisement to local and state governments
  - Produce fiscal notes for the General Assembly
  - Produce the Annual Tax Expenditure Budget
  - Analyze impacts of tax changes (credits, exemptions, changes in rates, etc.)
  - Support for the Georgia State Economist
- Sister Center: Center for State and Local Finance
  - Research and analysis of public finance issues in Georgia, the Southeast and the Nation
  - Leader in the use of “big data” to provide information for policy makers

# Tools available

- Substantial micro-level data:
  - Individuals
  - Firms
- ES202 Data
  - Wages by sector by quarter
  - Questions that can be answered:
    - Which sectors see the most turnover in labor?
    - Which industries saw the largest number of layoffs?
    - Where do we see employment growth in the state—and which industries?

# Example of analysis

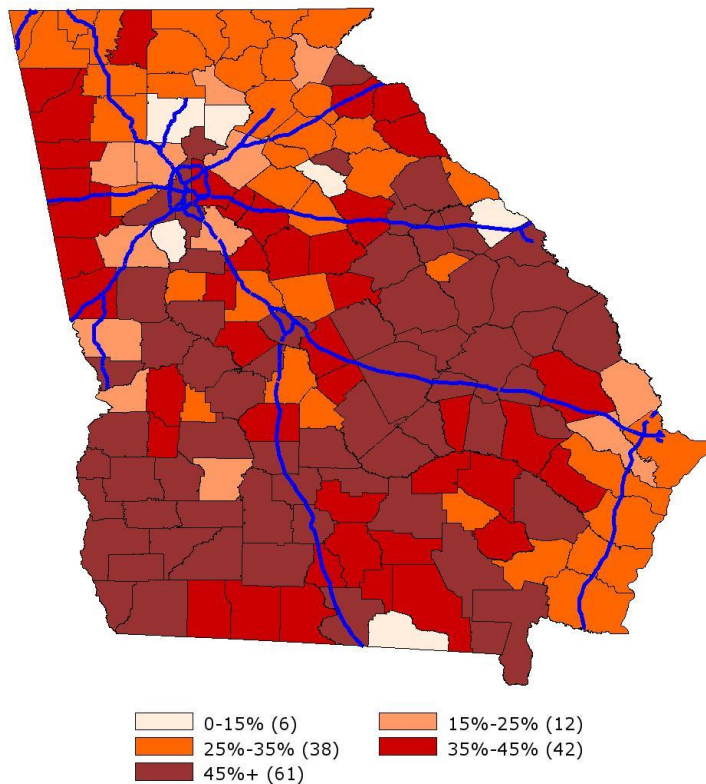
**Chart 1: Georgia Sector Group Jobs Levels 2000 and 2012**



# Other Data and Capacity

- Tax return information
- SNAP, TANF

## Percent of families on SNAP in 2010 as a share of total families



There are five counties with more than 65% of families on SNAP during 2010

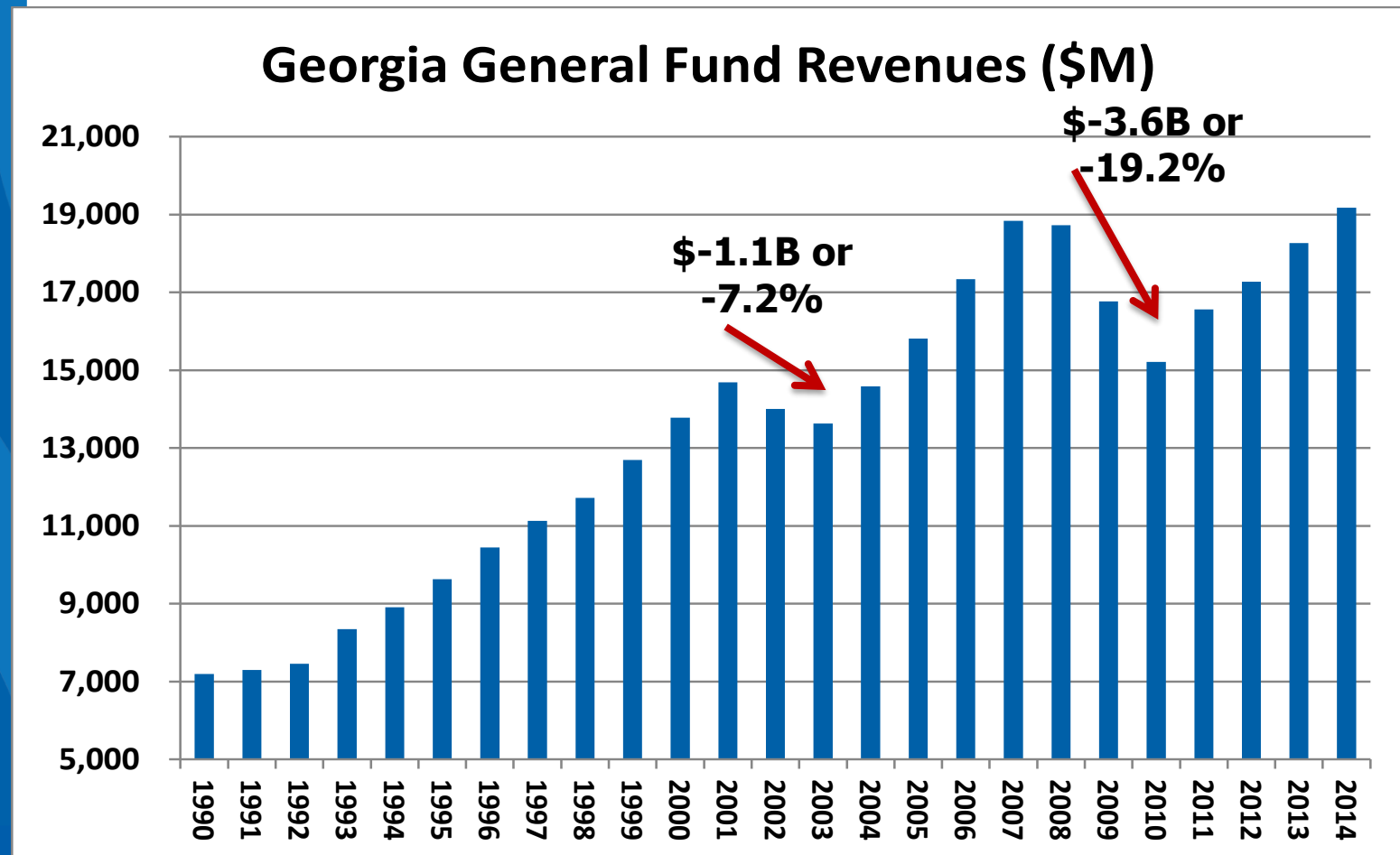
- And..modeling
  - Microsimulation model – allows detailed analysis of tax changes at state and federal level by income group, region
  - REMI: Regional Economic Models, Inc.
    - Proprietary
    - Helpful in analysis of direct and indirect impacts of tax credits, new business investments, on the Georgia economy

# Switching gears...

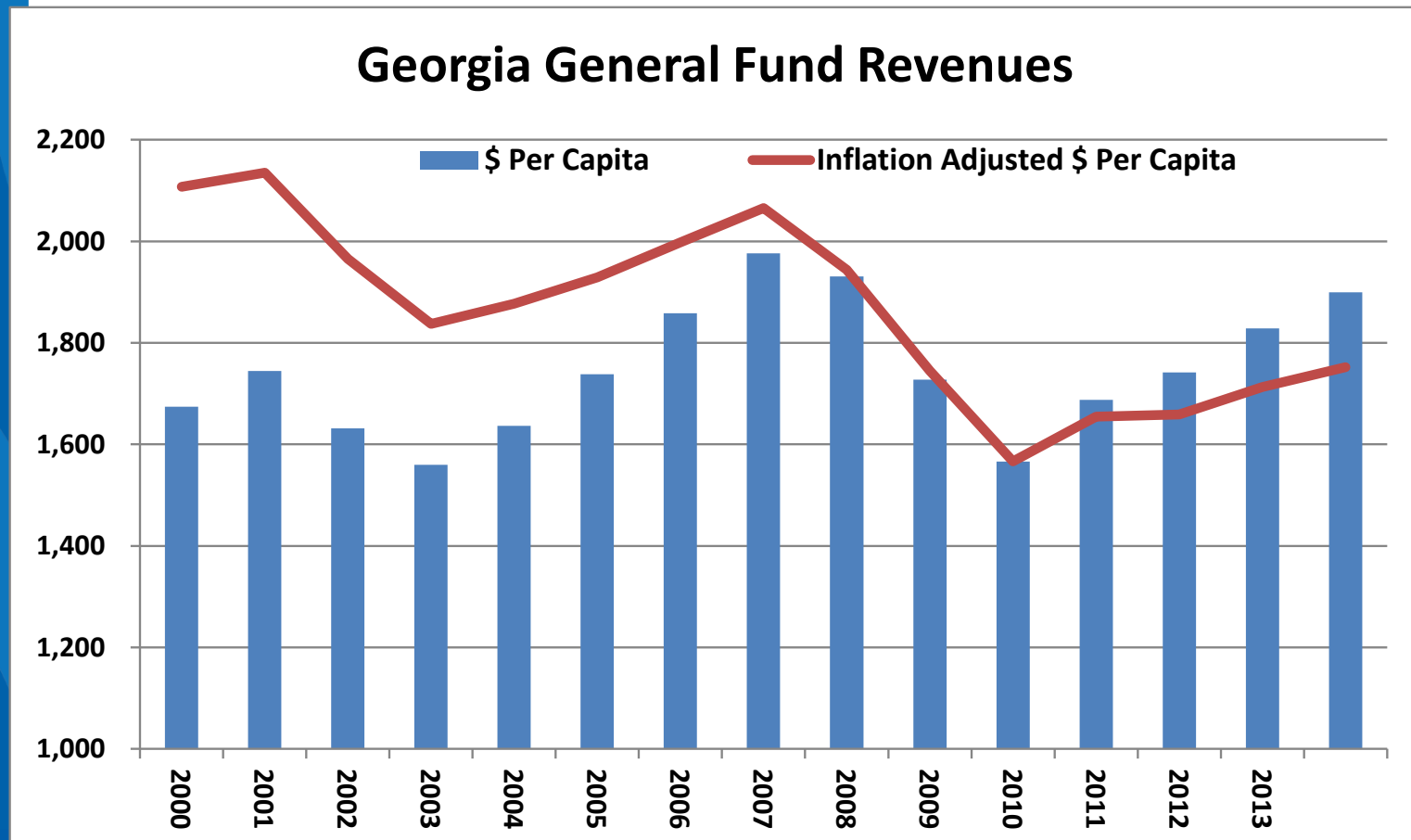
- What does our economic and fiscal landscape look like today?



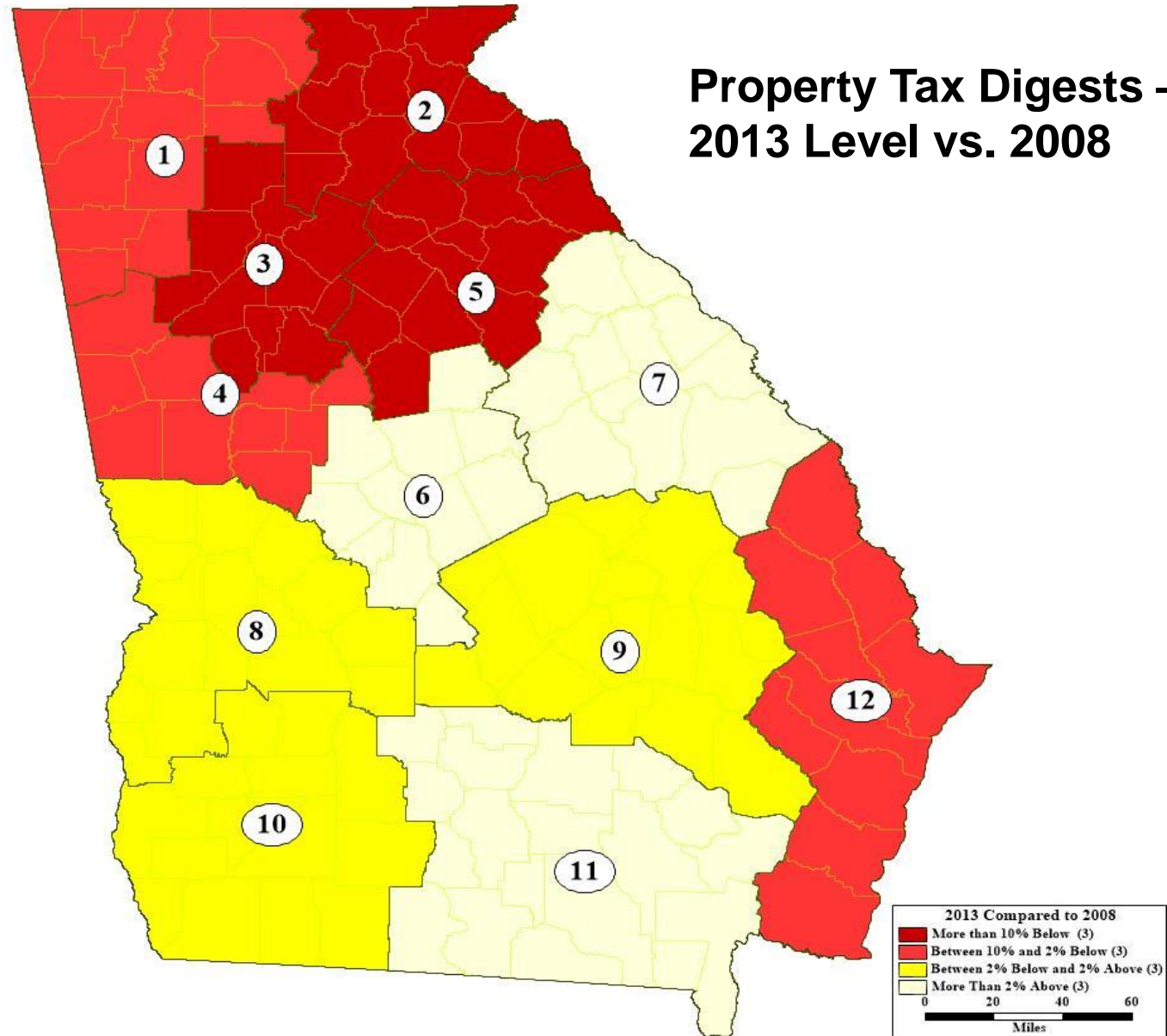
# In FY 2014, General Fund Revenues Finally Reached Pre-recession Peak



# But Adjusted for Inflation and Population Growth, Revenues are Still Below Prior Peak

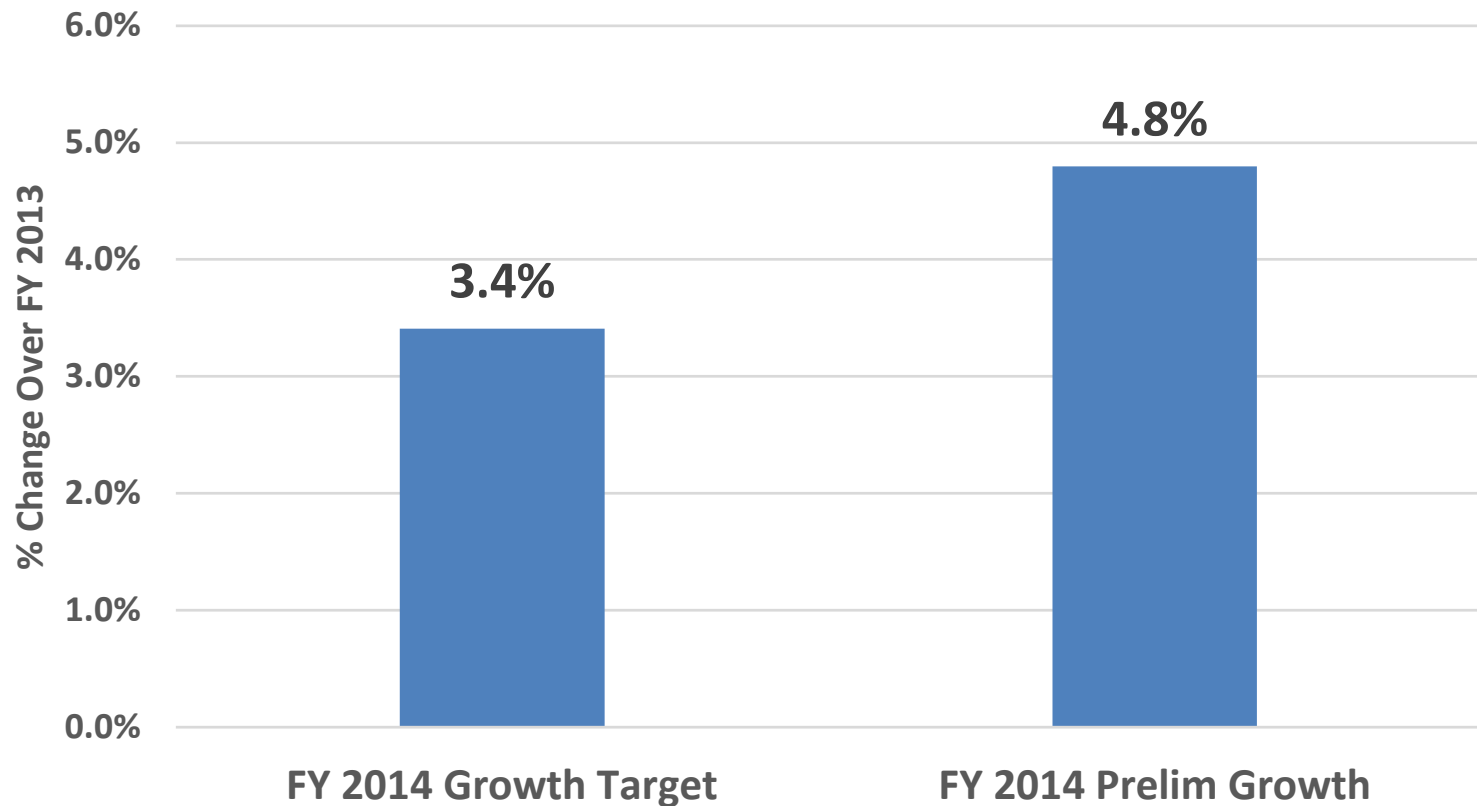


## Property Tax Digests – 2013 Level vs. 2008



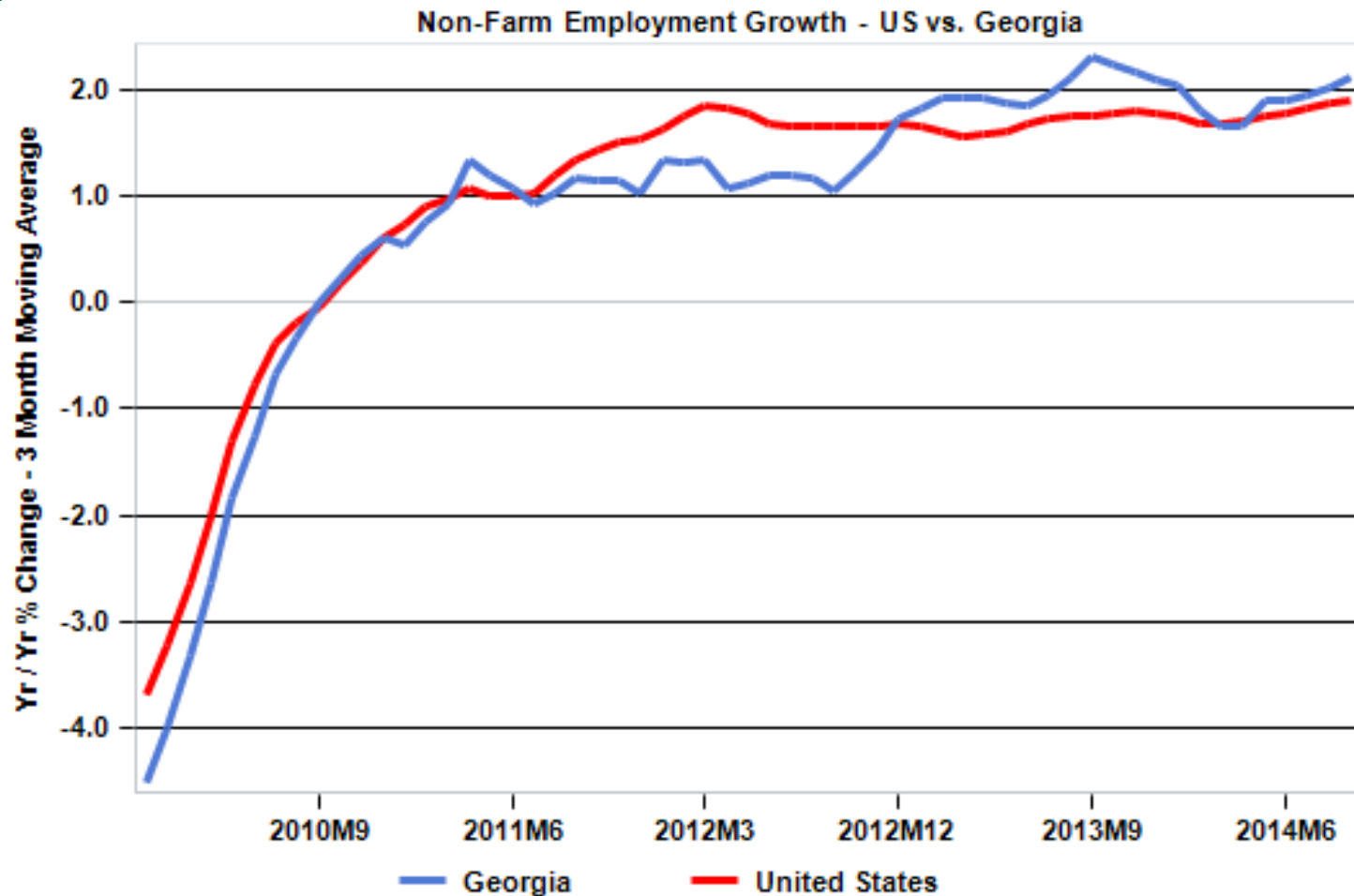
# FY 2014 Revenues Outperformed Budget Plan

## Georgia General Fund Revenues



# Georgia Employment Growth in Line with US

## Growth

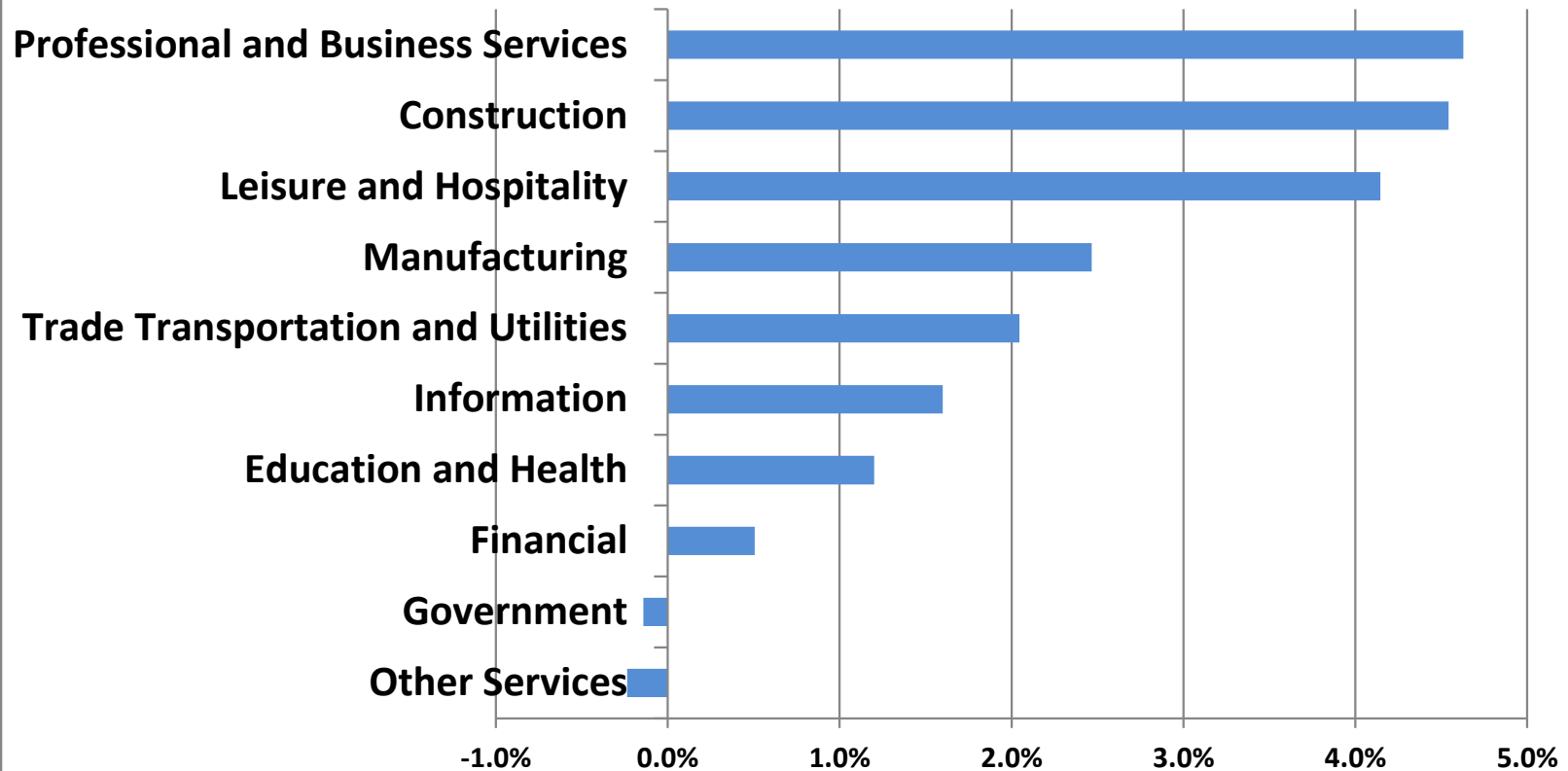


# Growth is Diversified Across Industries



## GA Sector Employment Growth - September 2014

Yr/Yr % Change - 3 Month Moving Average

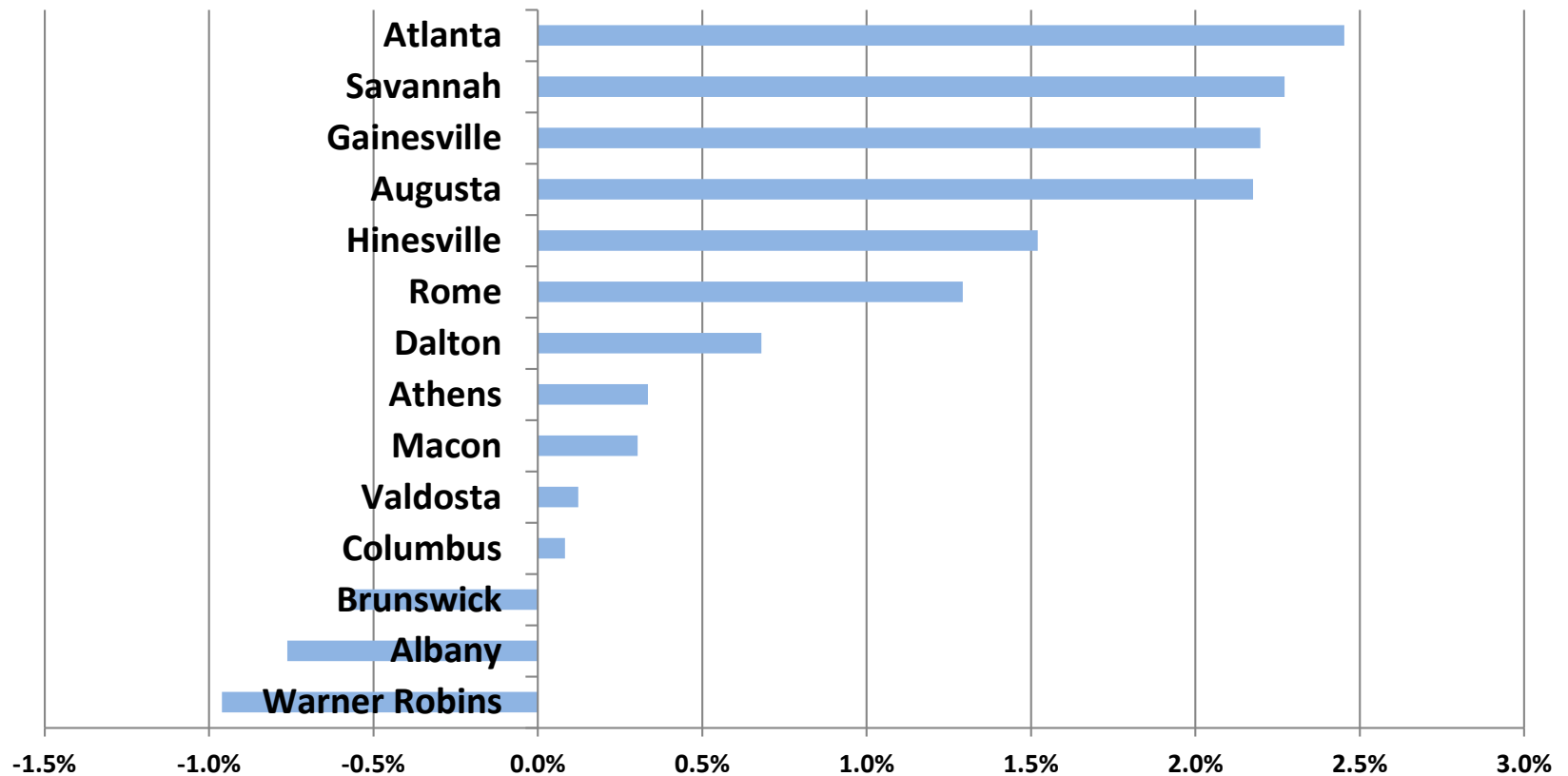


# Significant Regional Disparities in Growth Across Georgia



Employment Growth by Metro Area - Sept. 2014

Yr/Yr % Change - 3 Month Moving Average



## Recap

- *State and Local government revenues have stabilized and are growing.*
- *US economy seems poised for much faster growth than seen during recovery to date.*
  - Acceleration in housing activity and consumer spending is required to achieve and maintain a broad based expansion, but we are still waiting on clear acceleration in these sectors.
  - Slow global growth, threat of deflation in Europe could have big repercussions
  - Geopolitical risk is high.



# Other factors looming?

- Demographic shifts: quick overview

# Older

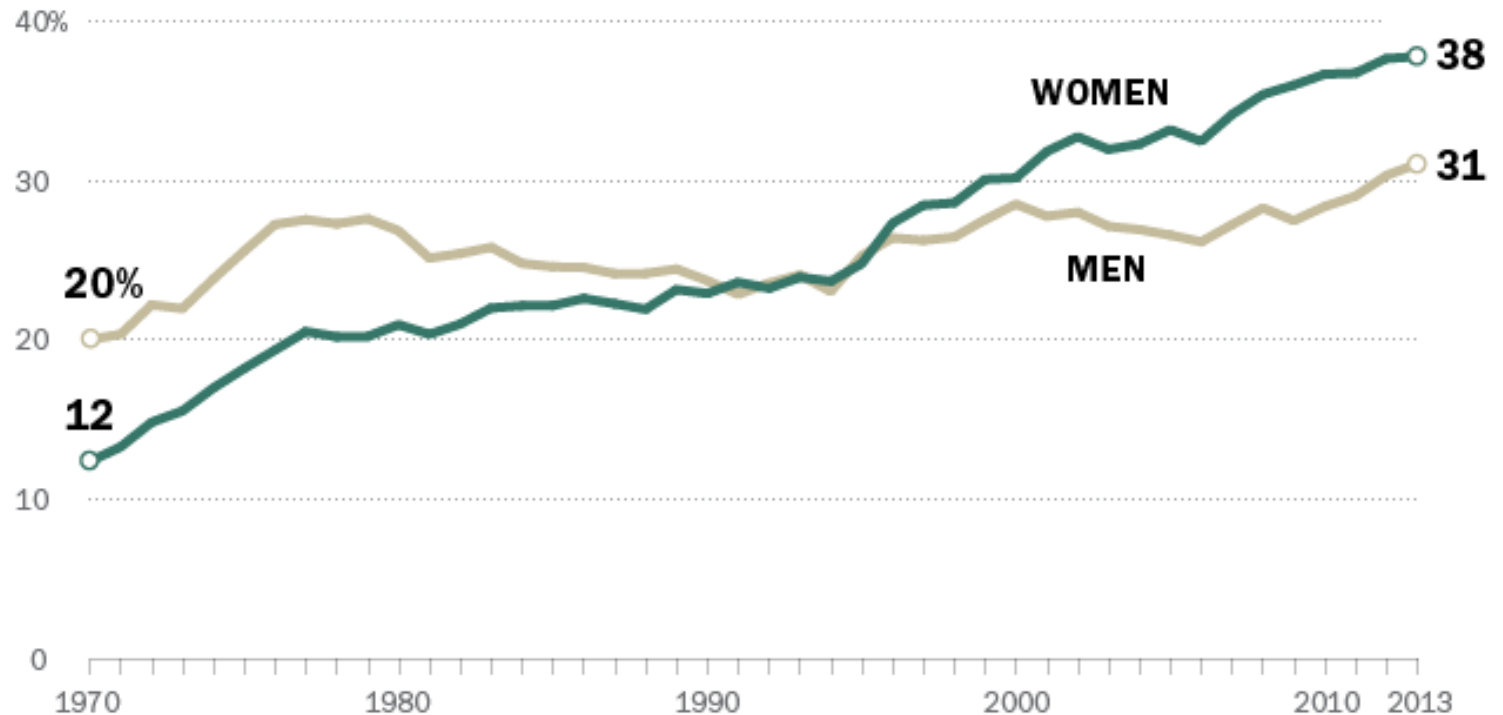
## U.S. Population, by Age Group: 1950-2050

Age/year	1950	1975	2000	2025	2050
<i>Number (in thousands, rounded)</i>					
Total	152,272	215,972	282,171	357,452	439,010
0-19	51,673	75,646	80,576	94,254	112,940
20-64	88,202	117,630	166,522	199,290	237,523
65-65+	12,397	22,696	35,074	63,907	88,547
<i>Percent in Age Group (rounded)</i>					
0-19	33.9	35.0	28.6	26.4	25.7
20-64	57.9	54.5	59.0	55.8	54.1
65-65+	8.1	10.5	12.4	17.9	20.2

**Source:** CRS computations based on data in the U.S. January 21, 2011 based on the Census Bureau's December 2010 data release. These data do not include results from the 2010 census.

# More Educated Women

Percent of 25-32 year-olds with a least a four-year college degree



Source: Pew Research Center tabulations of Current Population Survey data.

PEW RESEARCH CENTER

# More Diverse

## Projected U.S. Population, by Race: 2000-2050

(numbers in thousands)

Population	2000	2010	2020	2030	2040	2050
Total	282,125 (100.0)	310,233 (100.0)	341,387 (100.0)	373,504 (100.0)	405,655 (100.0)	439,010 (100.0)
White alone	228,548 (81.0)	246,630 (79.5)	266,275 (78.0)	286,109 (76.6)	305,247 (75.2)	324,800 (74.0)
Black alone	35,818 (12.7)	39,909 (12.9)	44,389 (13.0)	48,728 (13.0)	52,868 (13.0)	56,944 (13.0)
Asian alone	10,684 (3.8)	14,415 (4.6)	18,756 (5.5)	23,586 (6.3)	28,836 (7.1)	34,399 (7.8)
All other races <sup>a</sup>	7,075 (2.5)	9,279 (3.0)	11,967 (3.5)	15,081 (4.0)	18,704 (4.6)	22,867 (5.2)

**Source:** For years 2010-2050: U.S. Census Bureau, Population Division. "Table 4. Projections of the Population by Sex, Race, and Hispanic Origin for the United States: 2010 to 2050." (NP2008-T4). Release date: August 14, 2008. For year 2000: U.S. Census Bureau, "U.S. Interim Projections by Age, Sex, Race, and Hispanic Origin," Internet release data: March 18, 2004, at <http://www.census.gov/ipc/www/usinterimproj/>.

# Lessons?

- Diversity in the labor market on top of slow recovery
- Labor Supply Policies (e.g. educational attainment, training, etc.) specific for demographics?
- Flexibility in economic development from supply and demand side?
- Is there a new norm?

# Thank you

- [swallace@gsu.edu](mailto:swallace@gsu.edu)
- 404-413-0046